

SDG11 – 11.4.7 Address Planning – Fatih Municipality & KHAS Survey Projects

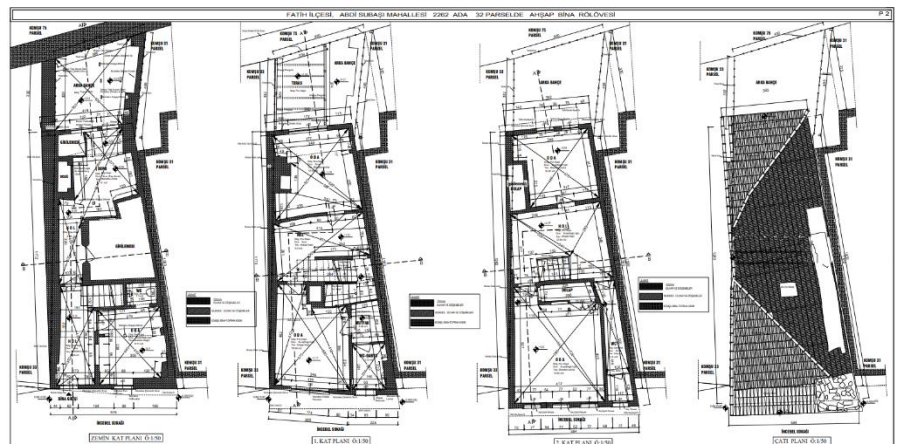
In the project of taking surveys of the buildings in the Fatih region, carried out jointly by Fatih Municipality and our school, Kadir Has University, it is aimed to take surveys of a total of 70 buildings in the first phase.

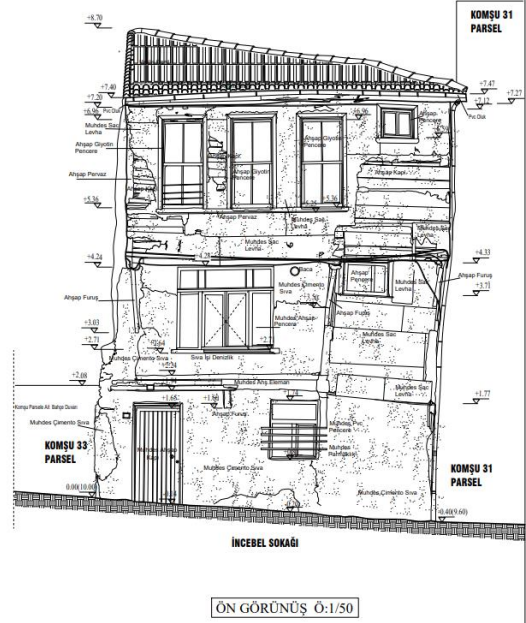
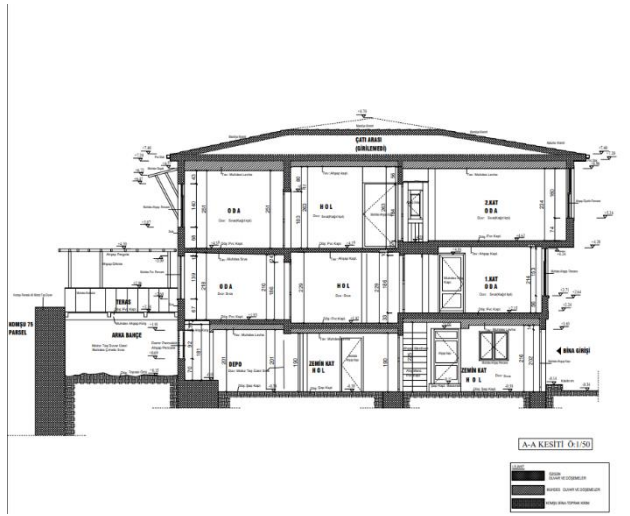


These structures determined by the Municipality were uploaded to the database and their survey was initiated in order to ensure that there is no area left without data about the structure. In case of any disaster, structures may be damaged, destroyed, etc. In order to reach the history of the building on that island-plot when such situations occur, the survey of the building must be obtained from public institutions, therefore this work we are carrying out for the missing

surveys is extremely important.

Firstly, three-dimensional scans of the buildings to be surveyed were made. Three-dimensional scanning can be thought of as taking an x-ray of the structure. It enables to reveal the structures with all their details. Afterwards, each building that has been scanned is visited and surveyed one by one by going to the block-parcel where it is located and added to the municipality's database.





At the evaluation meeting on "Resurfacing, Restitution and Restoration Studies of the Immovable Cultural Heritage of Istanbul Province" held under the chairmanship of Istanbul Governor Davut GÜL at the Istanbul Governorship AFAD meeting hall on August 2, 2023, Fatih Mayor Mehmet Ergün Turan talked about the survey studies we carried out and stated that such a project among universities He mentioned that we are the first university to undertake this.

More than half of the 70 surveys in our list have been completed and work continues for the remaining islands-parcels. It is aimed to complete the survey of the targeted 70 places by the end of 2024.

